

NetWay 8100 Controller

Site Management Solutions



Competitive Advantage

- All inclusive remote site management system
- Expandable and flexible Site management platform.
- UniPod concept enables operator to monitor & manage site equipment
- Standard AISG and SNMP interface

Remote site management:

- Monitoring of Antenna Line devices (RETs and TMA)
- 3rd party equipment management through dry contact and pass through:
 - Power generator
 - Battery monitoring
 - Backhaul, including Microwave
 - Alarm monitoring

Business Challenge

- Network footprint & cell site complexity has grown substantially (RF and auxiliary equipment, # of devices, # of vendors)
- More sites per tech, more regulations, gaps in operational tools
- Increasing focus on OpEx to drive financial results

Market Needs

- Cost-effective remote visibility to all systems at cell site
- Higher efficiency tools for field techs, NOC and RF teams
- Site-specific proactive event/alerts correlation
- Effective remote preventative maintenance

Product Description

- Netway Vision is a remote cell site management system helping mobile operators increase operational efficiency and reduce OpEx by managing a wide range of systems and devices at cell sites:
 - Service-related: (ex. RET antennas, MW systems, backhaul, ...)
 - Power-related (primary power, backup: batteries, generators,...)
 - Environmental (ex. temperature, humidity, air conditioning, smoke,...)
 - Security (access/motion, indoor/outdoor video, perimeter intrusion)

Differentiators

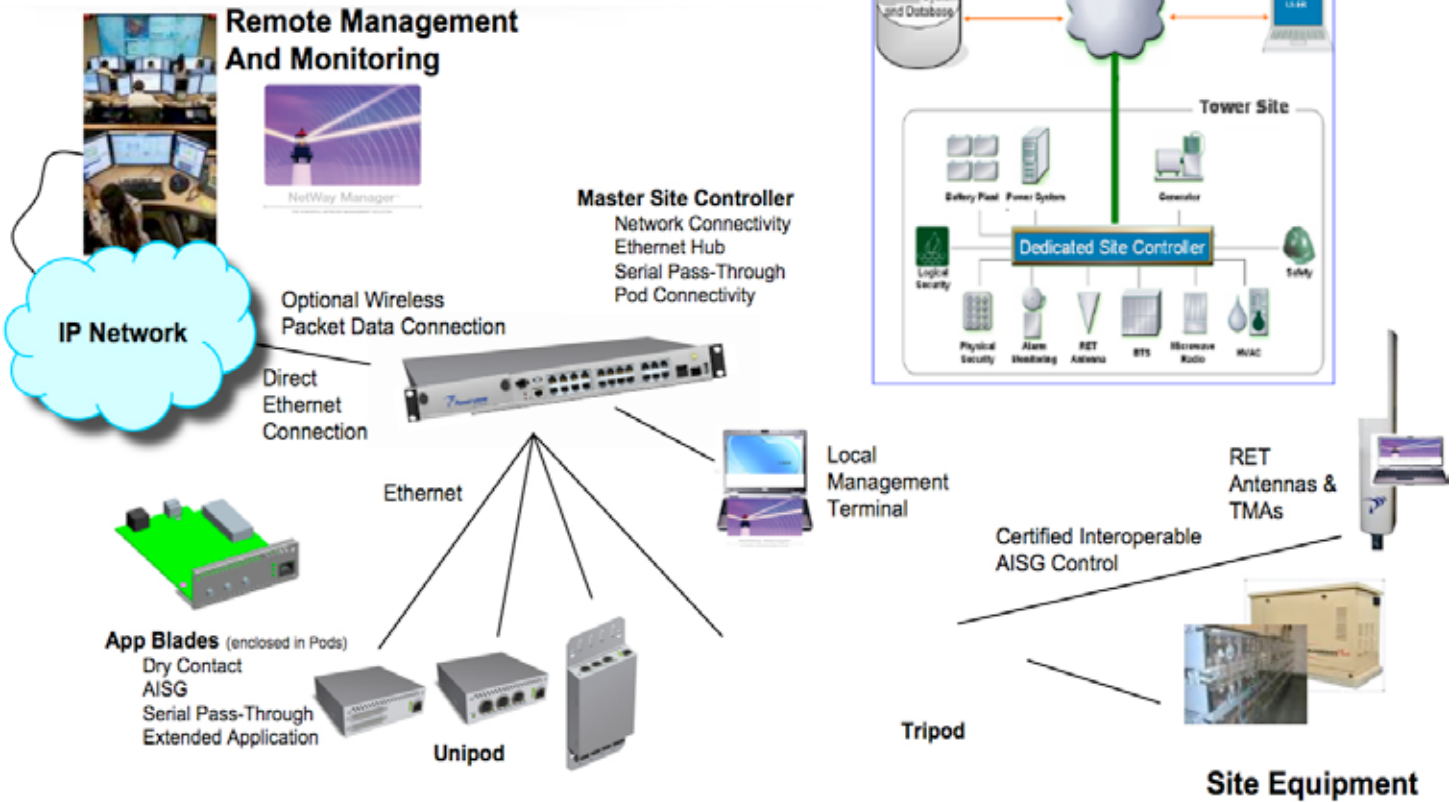
Credibility: First complete purpose-made cell site mgmt w/RF
 Rapid payback: Cost scalable, resources AND energy savings
 Ease of Integration/evolution: open, modular, standards-based

- All inclusive Remote site management
- Expandable and flexible Site management
- Monitoring of Antenna Line devices

NetWay 8100 Controller

NetWay 8100 Controller

Site Management Solutions



NetWay 8100 Controller

Master Unit

Key Features

- Integrated SNMP agent
- +24 or -48 VDC
- 6 serial ports
- 18 Ethernet ports for support system management
 - Source for 8 Power Over Ethernet
 - 1 Maintenance Ethernet port
 - 1 Site Ethernet port (backhaul)
- Auxiliary power provided for blades (if necessary)
- IP Ethernet WAN backhaul
- Wireless backhaul optional
- Compatible with NetWay Manager 3
- Remote configurable via web interface



Electrical Specifications

Power Inputs	+/- 18-54 VDC
Power Source Equipment	1, 2 and 4 hour optional
	Power Over Ethernet (IEEE 802.3af) for application blades

Mechanical Specifications

Dimensions (H x W x D)	1U (1.75 in) x 17.72 in x 10 in (44.5 mm x 450 mm x 254 mm)
Weight	< 6 lbs. (< 2.7 kg)
Rack Mounted	19" rack (21" or 23" also supported)
Wall Mounted	Wall mounting kit optional
LEDs	Power, Alarm, Communication Link & Speed
Operating Range	-30 C to +50 C (0-95% non-condensing)
Certificates	NEBS3, UL 60950-1 (2007), FCC (Part 15)

Processing

RAM	128 MB (minimum)
Flash Storage	128 MB (minimum) - Expandable

Communications

Primary WAN Backhaul	Ethernet IP (T1/E1 Optional)
Secondary WAN Backhaul	Wireless (GSM/GPRS, CDMA or UMTS) Optional
Northbound Traffic	SNMP v1, v2c, v3, http, sftp, ssh (to NetWay Manager)
Serial Ports	6 RS232/RS422 asynchronous ports expandable via Application Blade
Subsystem Ethernet Ports	16 (10/100 BaseT) expanable via Application Blade (includes 8 POE supported)
Maintenance Ethernet Port	1 (10/100 BaseT)
Site Ethernet Port	1 (10/100 BaseT)

- All inclusive Remote site management
- Expandable and flexible Site management
- Monitoring of Antenna Line devices

NetWay 8100 Controller

Dry Contact Blade

Key Features

- 48 alarm inputs for surveillance of site support equipment
- 10 analog inputs for measuring site voltage and current
- 6 alarm outputs for alternate alarming notification
- Software configurable features
- Wall or rack mounted options
- Blade can be wall mounted near dry contact punch down block
- All connections on front of blade for easy installation/maintenance



Electrical Specifications

Input Power Source

Power Over Ethernet (IEEE 802.3af)

Mechanical Specifications

Unipod Housing

1U (1.75 in) x 5.5 in x 8 in (44.5 mm x 140 mm x 203 mm)

Tripod Housing

1U (1.75 in) x 17.72 in x 8 in (44.5 mm x 450 mm x 203 mm)

Blade Install/Removal

Front Access of Pod

Master Unit Port

Ethernet (10/100 BaseT minimum)

Maintenance Port

Internal

LEDs

Power, Alarm, Communication Link and Speed

Operating Range

-30 C to +50 C (0-95% non-condensing)

Certifications

NEBS3, UL 60950-1 (2007), FCC (Part 15)

Dry Contact Blade Specifications

Subsystem Input Interface

48 Bi State (RJ21) - software configuration

Subsystem Analog Interface

10 (0-10V or 4-20mA) (RJ21)

Subsystem Control

6 Form C relays SPDT (RJ21) - software configured

Northbound Communication

SNMPv3, v2, v1, ssh, sftp

- All inclusive Remote site management
- Expandable and flexible Site management
- Monitoring of Antenna Line devices

NetWay 8100 Controller

AISG Blade

Key Features

- TMA and RET monitoring and control
- 3 port / 3 sector
- Supports both AISG v1.1 and 2.0
- Interoperable with AISG certified systems
- Wall or rack mounted options
- All connections on front of blade for easy installation/maintenance



Electrical Specifications

Input Power Source

Nominal 26 VDC

Mechanical Specifications

Unipod Housing

1U (1.75 in) x 5.5 in x 8 in (44.5 mm x 140 mm x 203 mm)

Tripod Housing

1U (1.75 in) x 17.72 in x 8 in (44.5 mm x 450 mm x 203 mm)

Blade Install/Removal

Front Access of Pod

Master Unit Port

Ethernet (10/100 BaseT minimum)

Maintenance Port

RS232 Internal

LEDs

Power, Alarm, Communication link and speed

Operating Range

-30 C to +50 C (0-95% non-condensing)

Certifications

NEBS3, UL 60950-1 (2007), FCC (Part 15)

AISG Blade Specifications

Subsystem Input Interface

3 DIN connectors or SMA connectors with integrated LOC

ALD Supplied Voltage

Nominal 26 VDC

Southbound Communication

AISG 1.1/2.0

Southbound Baud Rate

9.6 kbps, 38.4 kbps, 115.2 kbps

Northbound Communication

SNMPv3, v2, v1, ssh, sftp

- All inclusive Remote site management
- Expandable and flexible Site management
- Monitoring of Antenna Line devices

NetWay 8100 Controller

www.powerwave.com



1801 East St. Andrew Place
Santa Ana, CA 92705 USA
+1 714 466 1000
+1 714 466 5800 FAX
www.powerwave.com

Knarramasgatan 7 8tr.
164 40 Kista, Sweden
+46 8-540-822-00
+46 8-540-824-91 FAX

23 F Tai Yau Building
181 Johnston Road
Wanchai, Hong Kong
+852 2512 6123
+852 2575 4860 FAX