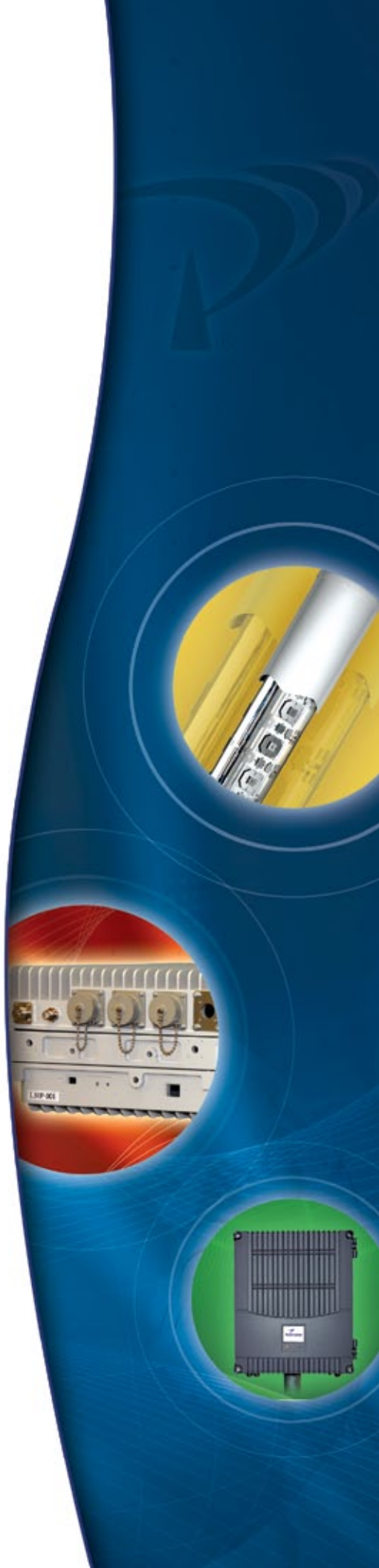


POWERWAVE PRODUCTS

- ANTENNA PRODUCTS
- BASE STATION PRODUCTS
- COVERAGE PRODUCTS



POWERWAVE

ANTENNA PRODUCTS: MORE THAN ONE MILLION SOLD THE WORLD OVER

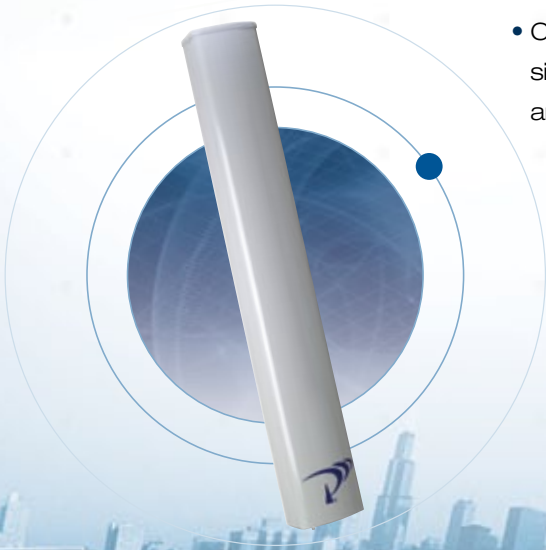
Offering one of the most extensive lines of base station antennas, Powerwave's product portfolio covers all major frequency bands and air interfaces and is coupled with engineering expertise forged by delivering more than one million antennas the world over. A focus on quality, innovation and performance results in antenna products that address today's greatest real world challenges.

Powerwave's iRET and iDiplexer antennas combine both upper and lower frequency bands on a single antenna and integrated remote electrical tilt functionality, giving you superior performance, efficiency and flexibility, with faster installation and improved maintenance.

With an integrated low loss and high power diplexer, Powerwave eliminates external parts and reduces cable runs to the tower by 50 percent.

COMMERCIAL PRODUCTS

- Single, Dual and Triple Band antenna products lessen the visual impact of antenna deployments by reducing the required number of feeders, antennas and base station equipment components.
- 900MHz Quad antennas support deployment of 900MHz band 3G overlays over existing 900MHz GSM networks. They offer four ports coupled with performance, reliability and a compact antenna design.
- 2.6GHz antennas allow operators to leverage the emerging 2.6G spectrum and supports both WiMAX and LTE protocols. They offer a strong price-performance value proposition with a smart antenna design for both high data throughput and link range critical for WiMAX and LTE.
- Clean Site antenna products maximize tower space by integrating single- and multi-band antennas with high-performance tower mounted amplifiers (TMAs) and RET under a single radome.



PRODUCTS

BASE STATION PRODUCTS: POWER, PERFORMANCE AND INNOVATION

Powerwave is distinguished by its ability to rapidly deliver cost-efficient base station products for operators and OEMs. Our extensive expertise across all facets of RF and digital signal processing can be seen in our family of innovative and highly integrated base station solutions, including our industry-leading power amplifier products, industry-leading power amplifier products, TMA, filter and combining solutions, remote radio head products and innovative VersaFlex enclosure solutions.

POWER AMPLIFIER SOLUTIONS: FUTURE PROOF FOR RISK-FREE MIGRATION TO NEW STANDARDS

- Multi-Carrier Power Amplifiers (MCPAs)
- Single, Dual and Triple MCPA Outdoor Booster Systems

TMA, FILTER AND COMBINING SOLUTIONS: DESIGNED FOR THE HARSHTEST OF ENVIRONMENTS

- Single, Twin and Dual-band TMAs
- Same Band Combiners, Crossband Diplexers and Triplexers

REMOTE RADIO HEAD SOLUTIONS THAT LEAD THE INDUSTRY IN POWER AND EFFICIENCY

- Universal WiMAX Remote Radio Head (RRH)
- W-CDMA Digital Radio Head (DRH)
- LTE Digital Radio Head

RF SITE SOLUTIONS: LEADING THE INDUSTRY IN SERVICEABILITY, DENSITY AND FLEXIBILITY

- VersaFlex™ Telecom Shelters
- MicroFlex™ Outdoor Wireless Cabinets
- SubTerra™ Controlled Environment Vaults
- RapidFlex™ Rapid Mobile Deployment Units

Offering performance and reliability, Powerwave base station products solve tomorrow's real world challenges today.





COVERAGE PRODUCTS TO OUTFIT THE MOST CHALLENGING INDOOR AND OUTDOOR ENVIRONMENTS

Powerwave delivers turn-key innovative commercial and public safety coverage and capacity solutions that give network operators, facilities owners and neutral hosts an edge over the competition.

Designed for even the most challenging indoor and outdoor environments, Powerwave's modular and integrated solutions are designed to reduce capital and operating expenses, speed rollout of services and help improve coverage, signal quality and capacity.

PUBLIC SAFETY REPEATER PRODUCTS

Ideal for tunnels, buildings, trains and ferries, Powerwave provides best-in-class flexibility and RF performance in a cost-effective coverage solution for medium-to-large venues.

Repeaters can be equipped with optional fiber optic module interfaces.

COMMERCIAL REPEATER PRODUCTS

Offering a solid foundation for any indoor/outdoor DAS deployment, Powerwave's Nexus FT™ with advanced multi-carrier power amplifier (MCPA) technology offers ultra linear high power operation.

Our Nexus FT repeaters are highly integrated and compact, minimizing site rental costs, zoning and permitting requirements for low total cost of ownership.

Unobtrusive and deployable on lamp poles, utility poles or the sides of buildings, Nexus FT repeaters offer high quality coverage for 3G and 4G technologies.

POWERWAVE COVERAGE PRODUCTS INCLUDE:

- High power wideband repeaters – Nexus FT
- Channel Selective Repeaters
- Band Selective Repeaters
- Digital Repeaters
- Maritime and In-train Repeaters
- Fiber Optical Interface and RF distribution Modules for DAS



GO TO THE HEAD OF THE CLASS WITH POWERWAVE UNIVERSITY



Powerwave University™ focuses on all aspects of wireless technologies and Powerwave's products to improve the knowledge and competence of our customers, whether their role is in installation, operations and maintenance, or engineering. Powerwave University employs many highly trained instructors with years of wireless telecommunications experience in order to deliver high quality training and knowledge transfer.

Training classes can be conducted at Powerwave's Technical Training Center in Santa Ana, Calif., or Coppell, Texas, as well as on site to address actual site configurations. We can also conduct training on Powerwave's Wireless Solutions Tour truck that travels throughout the United States.

For current Powerwave University class offerings, please visit our website at http://www.powerwave.com/powerwave_university.asp.



ABOUT POWERWAVE TECHNOLOGIES

A global leader in end-to-end wireless coverage and capacity solutions, Powerwave Technologies, Inc. offers cutting edge wireless infrastructure to address the demands of enterprise and commercial customers. Powerwave offers a comprehensive suite of solutions, including Antenna products, Base Station products and Coverage products. Powerwave's product line supports all wireless network protocols and frequencies including Next Generation Networks in 4G technology such as WiMAX and LTE. Powerwave solutions, products and services also help wireless operators and OEMs reduce capital and operating expenses, speed rollout of services, improve coverage and capacity, and reduce environmental impact. For more information, visit us at www.powerwave.com.



www.powerwave.com

Worldwide Corporate Headquarters

1801 East St. Andrew Place
Santa Ana, CA 92705 USA
+1 714 466 1000
+1 714 466 5800 FAX

Main European Office

Knarrarnasgatan 7 8tr.
164 40 Kista, Sweden
+46 8-540-822-00
+46 8-540-824-91 FAX

Main Asia-Pacific Office

2018-2019 Chevalier Commercial Building
8 Wang Hoi Road, Kowloon Bay,
Kowloon, Hong Kong
+852 2512 6123
+852 2575 4860 FAX