

# RET system cables

## RET system cables

Part Number  
See below

AISG Compatible

Outdoor Usage

The RET System Cables are a part of the Powerwave RET System.

The Powerwave 7095.xx RET Communications cables provide a direct connect option from the MCU to a RET Module. The 7095.xx series are offered in a variety of lengths and may be directly connected in series to create customer lengths.

The Powerwave 7085.xx RET Module Daisy Chain Cables are used to connect multiple RET Modules together at the tower or building top. This method of daisy chaining reduces the number of cables required from the MCU to the tower or building top antenna locations. These cables are also used to connect the MCU to the CILOC at the bottom of the tower. The 7085.xx series is offered in a variety of different lengths.

Cables

ANTENNA  
SYSTEMS

BASE STATION  
SYSTEMS

COVERAGE  
SYSTEMS



7085.05	RET short cable 0.5m
7085.15	RET short cable 1.5m
7085.30	RET short cable 3.0m
7085.50	RET short cable 5.0m
7095.10	RET long cable 10m
7095.20	RET long cable 20m
7095.30	RET long cable 30m
7095.40	RET long cable 40m
7095.50	RET long cable 50m
7095.60	RET long cable 60m
7095.70	RET long cable 70m
7095.80	RET long cable 80m
7095.90	RET long cable 90m
7095.110	RET long cable 110m


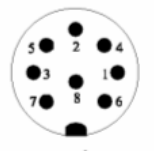
THE POWER IN WIRELESS®

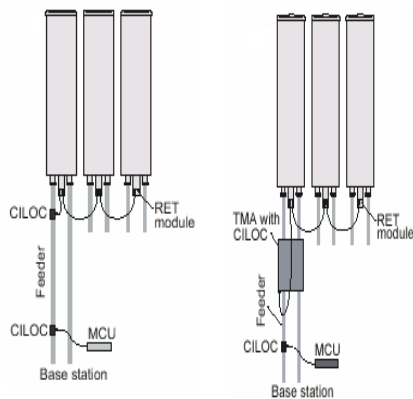
 **Powerwave**  
technologies

## RET System Cables

### Technical Specifications

Continuous current DC ports	3.5 A
Connectors AISG output/ input	IEC 60130-9 (Ed. 3.0)
Operation temperature range	-40 to +65C
Conductor area	2x 0.25mm <sup>2</sup> (388 mil <sup>2</sup> ) + 3x 0.75mm <sup>2</sup> (1162 mil <sup>2</sup> )
Type Approvals	Conformity with the relevant provision(s) of the directives RTTE 99/5/EG and LVD 73/23/EEG
Ingress protection	IP67 mated
Environmental	ETSI 300 019
Color	Black

8-pin connector	female	male
		
Pin 1	+12 V	+12 V
Pin 2	Not connected	Not connected
Pin 3	RS-485 B	RS-485 B
Pin 4	Not connected	Not connected
Pin 5	RS-485 A	RS-485 A
Pin 6	+24 V	+24 V
Pin 7	DC return	DC return
Pin 8	Not connected	Not connected



Powerwave RET system is designed to meet the high requirements for reliability, flexibility and efficiency in remote control of tower-mounted telecommunication equipment.

The system consists of a Master Control Unit (MCU) that controls the Antenna Line Devices (ALDs) and supplies DC power to them via a common bus. ALDs are connected to the MCU using a separate ALD system cable or by using the existing RF feeders in your system.

**Corporate Headquarters**  
Powerwave Technologies, Inc.  
1801 East St. Andrew Place  
Santa Ana, CA 92705 USA

Tel: 714-466-1000  
Fax: 714-466-5800  
www.powerwave.com

**Main EMEA Office**  
Knarramasgatan 7 8tr.  
164 40 Kista, Sweden  
Tel: +46 8-540-822-00  
Fax: +46 8-540-824-91

**Hong Kong Office**  
23 F Tai Yau Building  
181 Johnston Road  
Wanchai, Hong Kong  
Tel: +852 2512 6123  
Fax: +852 2575 4860

